

Model 200 Vibration Meter

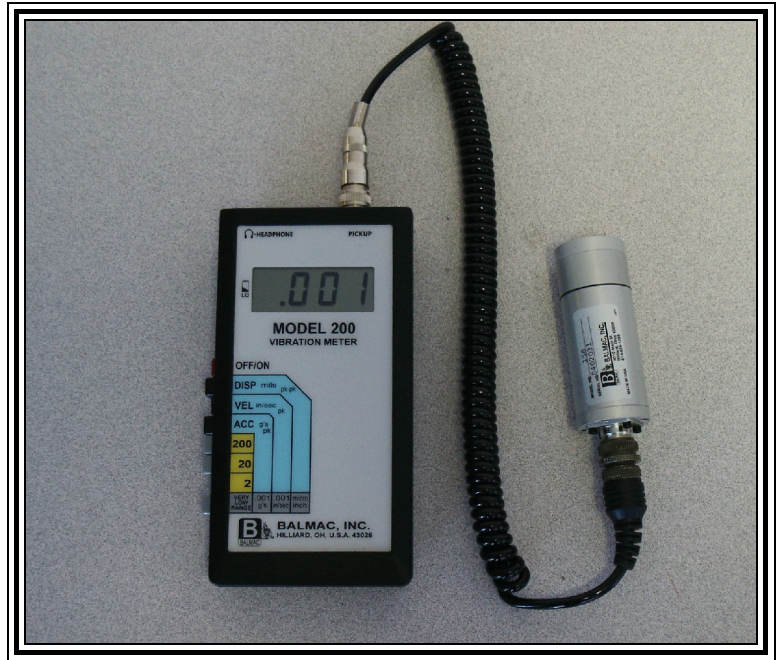
Model 200M Metric Vibration Meter

Features:

Model 200 Vibration Meter and 200M (Metric) measures overall vibration amplitude in the range of 180 to 200,000 RPMs on rotating machinery. Applications include checking vibration conditions on bearings, motors, fans and pumps. The portable, battery-operated, hand-held Meter features a rugged, heavy-duty pickup for measuring vibration Displacement, Velocity and Acceleration. The Meter includes a 6' coil-cord cable, a 7" probe extension and a magnetic base attachment for the Transducer.

Model 200 Kit Includes:

- Meter, Cable and Transducer (shown)
- Magnetic Base Clamp
- 7" Probe Tip (1/4-20 Mounting Stud)
- Carrying Case
- Manual and Calibration Certificates
- "B" Book Guide to Vibration Measurement
- Vibration Severity Wallet Card



Specifications:

AMPLITUDE METER RANGE:

English: 0.001 to 199 mils (peak-to-peak) Displacement
 0.001 to 199 in/sec (peak) Velocity
 0.001 to 199 g's (peak) Acceleration
 Note: Very low Range in units of 0.001 g's, 0.001 in/sec, & micro-inches
 Metric: (200M) Displacement micrometers (μm) peak-to-peak
 Velocity millimeters-per-second (mm/s) peak
 RANGE: Four selectable ranges with over-range indication for each range

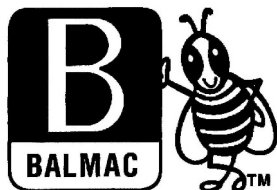
	English (Usable)	Metric (Usable)
High	20 = 20.0 to 199.9	2000 = 200 to 1999
Medium	20 = 2.00 to 19.99	200 = 20.0 to 199
Low	2 = .020 to 1.999	20 = 2.00 to 19
VLR	20.0 to 199.9	20.0 to 199.9

Note: Very Low Range in units of 0.001 g's, 0.001 in/sec, & micro-inches

SENSITIVITY:

Displacement: 0.000001 inch (0.001 mil) (1 micro-inch) (0.0254 μm)
 Velocity: 0.001 inch/sec (0.02 mm/sec)
 Acceleration: 0.001 g

ACCURACY: 5% of Full Scale
 FREQUENCY RANGE: 180 to +120,000 rpm (3 to +2000 Hz) using Model 158 Pickup
 DISPLAY: 3 1/2 digit, numeric LCD (with Low Battery indicator); 3/4" characters
 INPUT: Balmac Model 158 Vibration Velocity Transducer
 Optional Pickup Model 160 Transducer for Low Frequency Applications
 OUTPUT: Signal for Headphones; 1/8" Mono jack
 CONTROLS: Dedicated-function pushbuttons for all measurements
 POWER: One standard 9-volt alkaline battery
 OPERATING TEMPERATURE: 32° to 122°F (0° to 50°C)
 ENVIRONMENTAL: Relative humidity 0-95% non-condensing
 DIMENSIONS:
 Model 200 7.67" H x 3.97" W x 1.73" D (19 x 10 x 4 cm)
 Carrying Case 13.5" H x 10.5" W x 4.5" D (34 x 26 x 11 cm)
 WEIGHT:
 Unit & standard accessories 5 lbs (2.3 kg)
 Unit & pickup 2 lbs (<1 kg)



BALMAC INC.
 8205 Estates Parkway Door N
 Plain City, OH 43064 USA

614-873-8222 Fax 614-873-2519
 sales@balmacinc.com

www.balmacinc.com